

SAINT JOHN SHOPPING MAP

ALL ASHORE!

An Overview of Saint John

Saint John is the largest city in New Brunswick, Canada. It is located at the mouth of the Saint John River on the Bay of Fundy. History records that the French explorers Sieur de Monts and Samuel De Champlain arrived at the mouth of what is now the St. John River on June 24, 1604, feast day of Saint John the Baptist, and named the River in the saint's honor. Portland Point is an important historic landmark on the east side of Saint John Harbor. It was here that the first permanent French settlement in that part of Acadia now known as New Brunswick was made. It was fortified by Charles La Tour, who was made lieutenant governor in 1631 to 1635 and engaged in trade with the natives.

The British occupied it in 1758 and renamed Fort Frederick. The latter was destroyed by American revolutionaries in 1775 but was replaced by Fort Howe, whose block house has since been reconstructed. The settlement began to develop in 1783, when the United Empire Loyalists established Parr Town and Carleton around the harbor. In 1785 the two communities amalgamated as Saint John to become Canada's first incorporated city. A year-round ice-free harbor fostered shipping, shipbuilding, and fishing. A disastrous fire of 1877 and a declining lumber trade checked economic growth. Saint John recovered, absorbed the city of Portland in 1889, the city and parish of Lancaster and part of Simonds parish in 1966, and became the province's commercial, manufacturing, and transportation center, with shipping facilities and one of the world's longest dry docks. Saint John has taken pride in its history and has restored many of the original buildings and homes. A walk down Prince William Street is like walking in the past.

King Street – Saint John's old Main Street, its sidewalks are paved in red rock. King's Square – Adjacent to the Burial Grounds, this city square features a large mass of melted stock from a hardware store that was demolished in the Great Fire of 1877. Loyalist House – Built by Loyalist Daniel David Merritt in 1810, this imposing building displays period furnishings.

Market Slip – This is the site where the first Loyalists landed in 1783. It is also the location of Barbour's General Store, a 19th-century shop reminiscent of the past as well as an old red schoolhouse, now a tourist information center. Old City Market – This block-long market, dating from 1876, offers up a variety of crafts and tasty delights. Trinity Church – Rebuilt after the Great Fire, the church features a coat of arms, the mark of the old monarchy, which was rescued from the council chamber at Massachusetts Bay.

STORE#

1

BRUNSWICK SQUARE SHOPPING CENTRE

UPTOWN'S LARGEST SHOPPING MALL - 3 levels of Shopping!

STOP BY THE SHOPPING DESK...
with any questions you might have!

Saint John at a Glance

Capital: Fredericton

Location: New Brunswick

Taxi: Limited taxis are available pierside and throughout the city

Currency: Canadian dollar

Language: English and French

Population: Approximately 751,171

Banking: Bank hours are Monday - Friday, 10am - 5pm.

Post Office: Located at Brunswick Square. Open Monday - Saturday, 9am - 4:30pm.

Airport: The Saint John Airport is located 10 miles from the city center eastbound on Loch Lomond Road.

Docking/Anchorage:

The ship will dock at the Port of Saint John on the starboard side of the Marco Polo Cruise Terminal

Port Adventures:

Check your ticket for the correct meeting time and location for your tour. Your Port Adventures Team will direct you to transportation. Taxi service is available outside the cruise ship terminal.

In Case of Emergency:

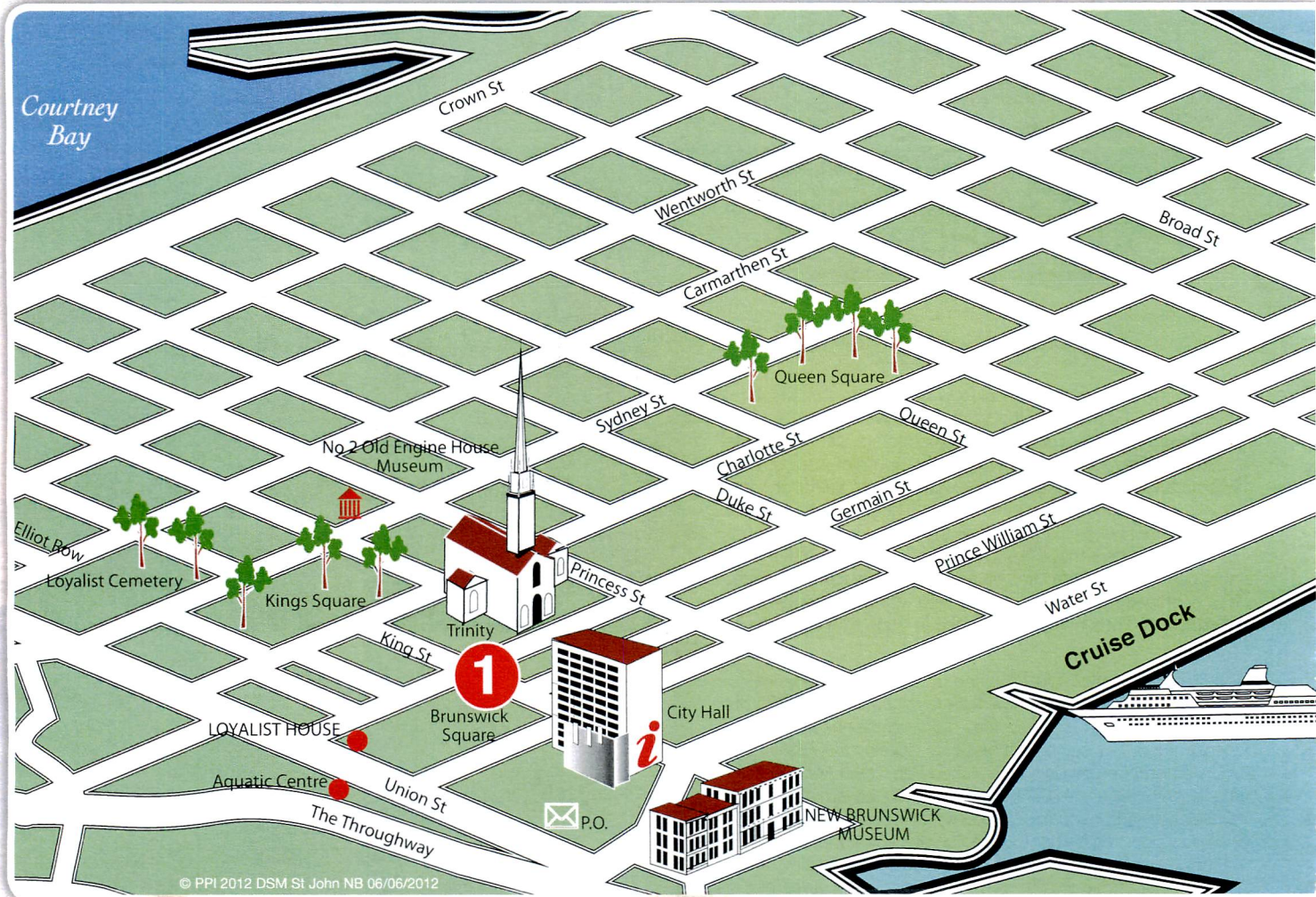
Port Agent – F.K. Warren Limited
1216 Sand Cove Road, Suite 134, Box 47
Saint John, N.B. E2M 5V8
Contact – Sean Perry – Mobile (506) 636-1255
Contact – Shelley Gerrier – Mobile (506) 647-8473
Email info@snb.fkwarren.ca
Call (506) 635-1303
Fax (506) 634-1933



SHOPPING GUIDE

Watch Channel 25-3 for more information!

PORT SHOPPING MA



Saint John

NEW BRUNSWICK

1

BRUNSWICK SQUARE SHOPPING CENTRE
Uptown's Largest Shopping Mall - 3 levels of Shopping

- Over 60 shops and services featuring unique boutiques & national retailers
- Fashion, children's shops, home décor, souvenirs and restaurants
- Home to Starbucks, Lawton's Drugstore, Scotiabank & much more
- Enjoy our inside pedway, connection to major Saint John attractions
- Located on King Street, a 2 minute walk from the cruise terminal

A DÉCOR 8

Level 1 Brunswick Square

- Be inspired by a wide array of un
- Carrying artwork from New Brun

B L'IL SHOP OF SCIENC

Level 1 Brunswick Square

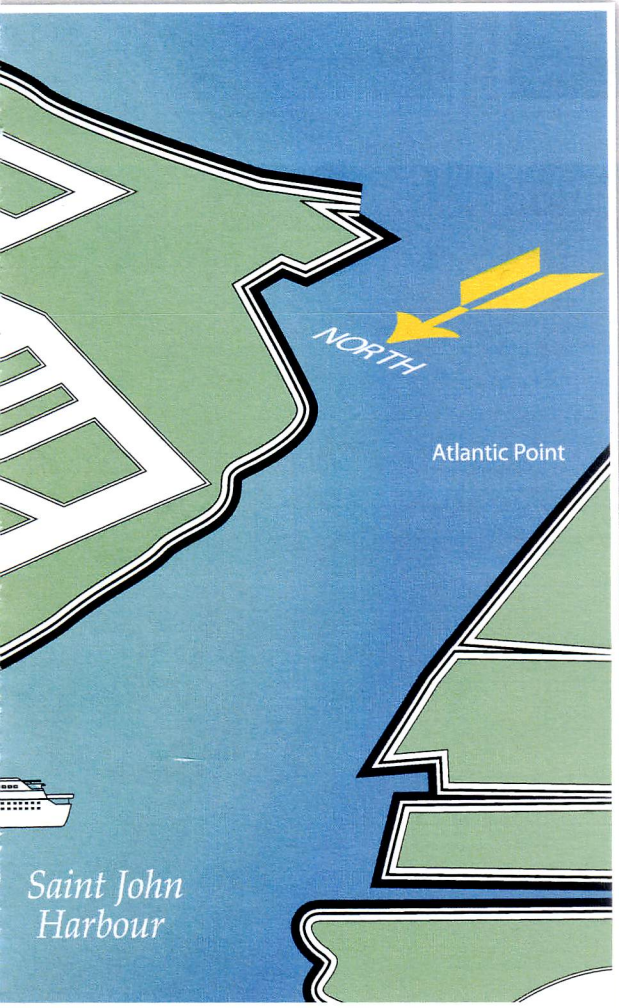
- Science starts here with creative
- Learning fun for everyone

C HALLMARK

Level 2 Brunswick Square

- Come visit us for all your cards,
- We accept U.S. currency & give





que décor for your home
swick artisans

periment kits, games and toys

stationery and souvenirs
back U.S. currency as change

D JE SUIS PREST BOUTIQUE
Level 2 Brunswick Square

- Enjoy a trendy, charming, unique women's clothing boutique
- We carry Canadian designed clothing, purses, scarves & jewelry

E EAGLE'S NEST GIFTS
Level 2 Brunswick Square

- The place to shop for true Canadian souvenirs.
- Authentic handmade native items and pure maple products

F PADDINGTON STATION
Level 3 Brunswick Square

- A unique children's store, featuring clothing, toys and giftware
- 16 years in business, our priority is a perfect blend of quality & value

Hilo

Puerto Vallarta Guadalajara Leon Tampico

Mexico

Mérida Cancun

Belize

Belmopan

Honduras

Tegucigalpa

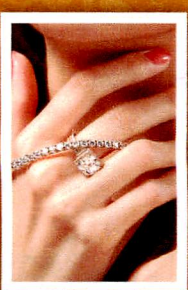
San Salvador

Nicarag

Managua

San José

Costa Rica



A large rectangular area with horizontal lines, serving as a space for notes or a list of items.

© PPI 2012 DSM Saint John NB 06/06/2012



Shop with confidence at each of the recommended stores. All stores listed on the map have paid a promotional fee and given Disney Cruise Line guests a Buyer's Guarantee valid for 60 days after purchase. This guarantee is valid for repair or exchange. Please note the following conditions that apply to the guarantee: Guest negligence or buyer's regret is excluded. Only appraisals from independent, accredited graduate gemologists not affiliated with any retail jeweler will be considered. Price paid for merchandise or verbal claims or agreements between merchant and guest will not be grounds for returns. Electronics and watches requiring service must be returned by the consumer to the respective manufacturer. All purchases, including fragile items, must be checked before leaving the store. Do not mail merchandise without prior authorization. Guests are responsible for postage and appraisal costs. The PPI Group, 4517 NW 31st Avenue Ft. Lauderdale, FL 33309-3403. Customer Service: 1.888.774.4768 or 954.377.7777, email: Service@ppigroup.com.